

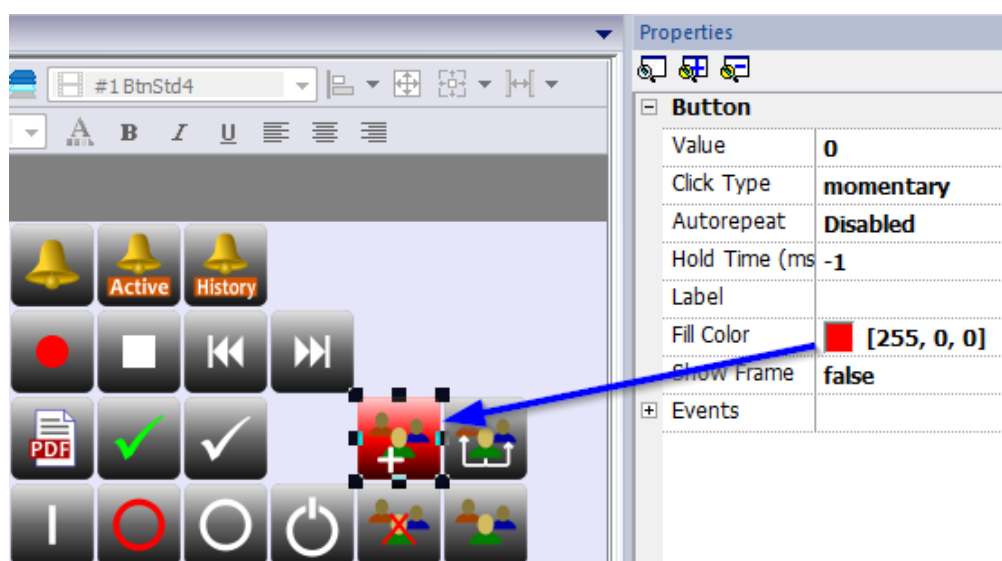
## Flow chart diagram symbols and switch elements for HM touch terminals - TB-Symkeys HM

The library TB-Symkeys HM helps you create HMWin applications with flow charts efficiently, e.g. for water management applications. The new library supports the HM terminals.

This product contains sample projects for HMWin with all symbols. The functionality is supported by a comprehensive PLC program that animates the flow chart objects. These libraries can be used for all HM series panels.



HM507



Screen shot of HMWin:

Flow diagram symbols of TB-Symkeys:

Name/status	passive	Off	On	Manual off	Manual on	Auto off	Auto on	Error
Index	0	1	2	3	4	5	6	7
Pump								
Pump								
Pump								
Pump								
UV reactor								
UV reactor								
Flow meter								
Flow meter								
Compressor								
Compressor								
Compressor								
Compressor								
Closed tank								
Open tank								
Mixer								
Filter								
Filter								
Dosing tank								

Symbols with more than one element are animated. The animation is controlled by the HM panel and the FPWin Pro library.

Line/pipe animated	0	1	2	3	4	5
horizontal				no picture		
vertical				no picture		

Complex symbols with control index from 0 to 19:

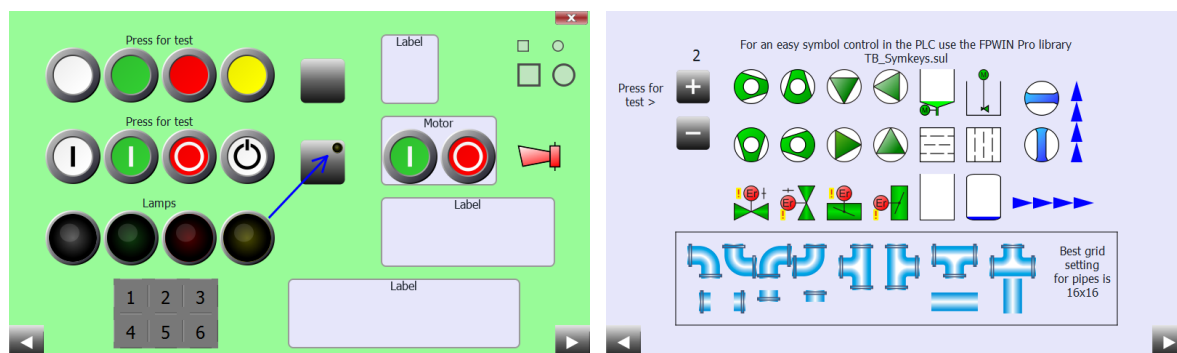
Valve horizontal					
Error					
Index, comment	0, default	1, end pos. - closed	2, no end position	3, end pos. - open	4
Normal					
Index, comment	5, end pos. - closed	6, closing	7, no end position	8, opening	9, end pos. - open
Manual					
Index, comment	10, end pos. - closed	11, closing	12, no end position	13, opening	14, end pos. - open
Automatic					
Index, comment	15, end pos. - closed	16, closing	17, no end position	18, opening	19, end pos. - open
Valve vertical					
Error					
Index, comment	0, default	1, end pos. - closed	2, no end position	3, end pos. - open	4
Normal					
Index, comment	5, end pos. - closed	6, closing	7, no end position	8, opening	9, end pos. - open
Manual					
Index, comment	10, end pos. - closed	11, closing	12, no end position	13, opening	14, end pos. - open
Automatic					
Index, comment	15, end pos. - closed	16, closing	17, no end position	18, opening	19, end pos. - open

Complex symbols with control index from 0 to 19:

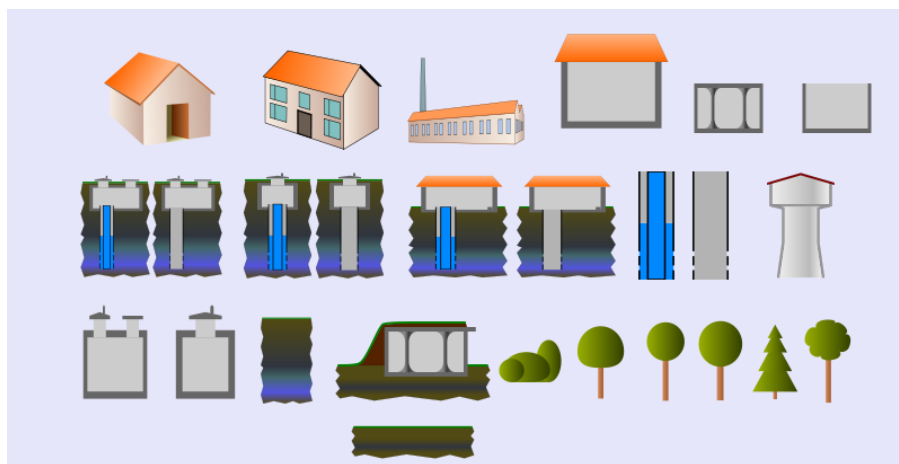
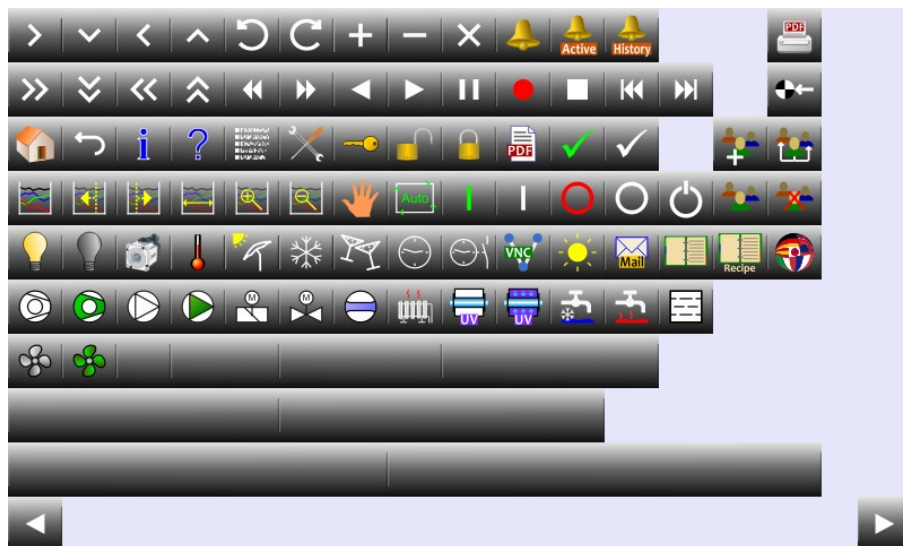
Damper vertical					
Error					
Index, comment	0, default	1, end pos. - closed	2, no end position	3, end pos. - open	4
Normal					
Index, comment	5, end pos. - closed	6, closing	7, no end position	8, opening	9, end pos. - open
Manual					
Index, comment	10, end pos. - closed	11, closing	12, no end position	13, opening	14, end pos. - open
Automatic					
Index, comment	15, end pos. - closed	16, closing	17, no end position	18, opening	19, end pos. - open
Damper vertical					
Error					
Index, comment	0, default	1, end pos. - closed	2, no end position	3, end pos. - open	4
Normal					
Index, comment	5, end pos. - closed	6, closing	7, no end position	8, opening	9, end pos. - open
Manual					
Index, comment	10, end pos. - closed	11, closing	12, no end position	13, opening	14, end pos. - open
Automatic					
Index, comment	15, end pos. - closed	16, closing	17, no end position	18, opening	19, end pos. - open

### Sample applications for HMWin

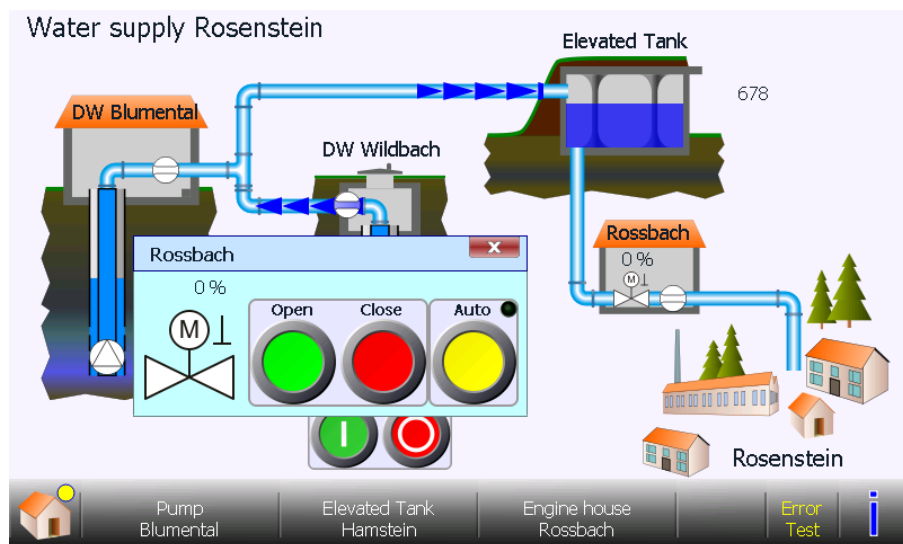
In the application example "HM507 SYMKEYS Lib" for HMWin, all symbols from TB-Symkeys are shown. You can copy parts of the sample application to use in a new project.



Screenshots from the HMWin project HM507 SYMKEYS Lib



Screenshots from the HMWin project HM507 SYMKEYS Lib



Screenshot from the HMWin project HM507 Symkeys Water supply Rosenstein

## Installation

The installation file is "Setup-TB-SYMKEYS-HM-Vx.yy.exe"

The default installation will create directories for all samples in the public folder (...\\Documents and Settings\\All Users\\Documents\\...)

- Example application

```
C:\Users\Public\Documents\Panasonic-ID SUNX Terminal\HMWin\TB-SYMKEYS for  
HMWin 2\HM Apps\HM507 Symkeys Water supply Rosenstein
```

```
C:\Users\Public\Documents\Panasonic-ID SUNX Terminal\HMWin\TB-SYMKEYS for  
HMWin 2\HM507 SYMKEYS Lib
```

- PLC program with all functions for the HM example application

```
C:\Users\Public\Documents\Panasonic-ID SUNX Terminal\HMWin\TB-SYMKEYS for  
HMWin 2\PLC Apps\PLC program
```

- FPWIN Pro FBs for symbol animation. Compatible to TB-Symkeys for GT's.

```
C:\Users\Public\Documents\Panasonic-ID SUNX Terminal\HMWin\TB-SYMKEYS for  
HMWin 2\PLC Apps\TB_Symkeys.sul for FPWIN Pro\
```

- This documentation

```
C:\Users\Public\Documents\Panasonic-ID SUNX Terminal\HMWin\TB-SYMKEYS for  
HMWin 2\
```

## Usage in HMWin

To use the TB-Symkeys HM with HMWin, open the sample project and an application project. Then copy all required elements from the demo application and insert it into your user application.

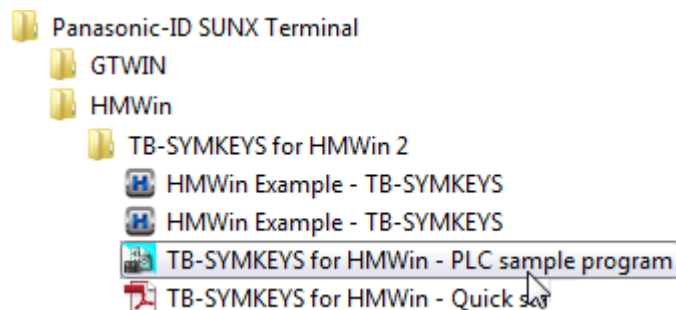
This has the advantage that the function of an element is better recognized and the work is accelerated.

The library TB\_Symkeys.sul is used to animate the flow chart symbols and is compatible with TB-Symkeys for GTs.

## Location to start



Windows Start menu ⇒ Programs ⇒ Panasonic-ID SUNX Terminal: ↗



## Item information

The library TB-Symkeys is freeware and can be downloaded from [www.panasonic-electric-works.com](http://www.panasonic-electric-works.com)